

Panel 1 Questions

WELLNESS • EQUITY • ENGAGEMENT

The Students we Serve

Enrollment and Student Demographics

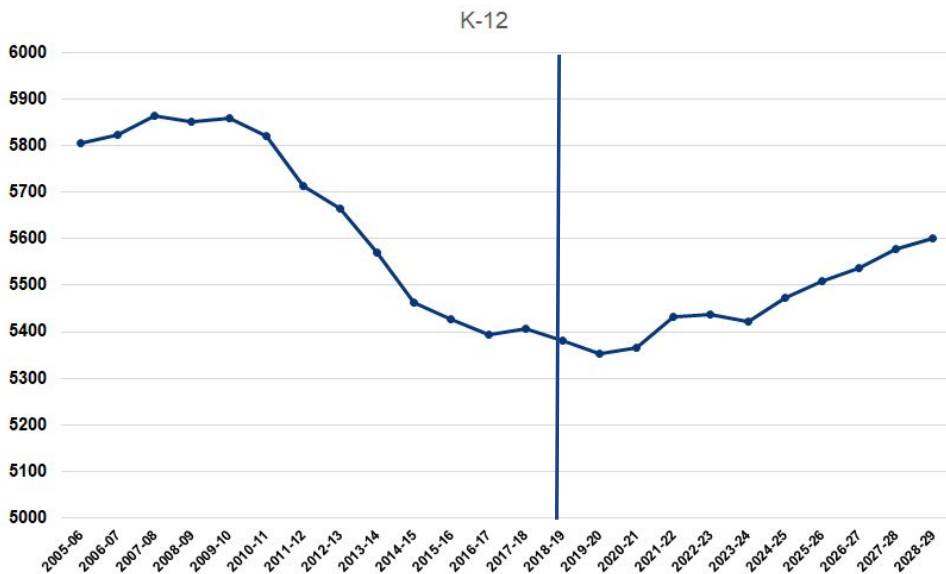
Marie Altieri *Deputy Superintendent*
Dr. Dawn Bentley *Assistant Superintendent for Student Services*

WELLNESS • EQUITY • ENGAGEMENT



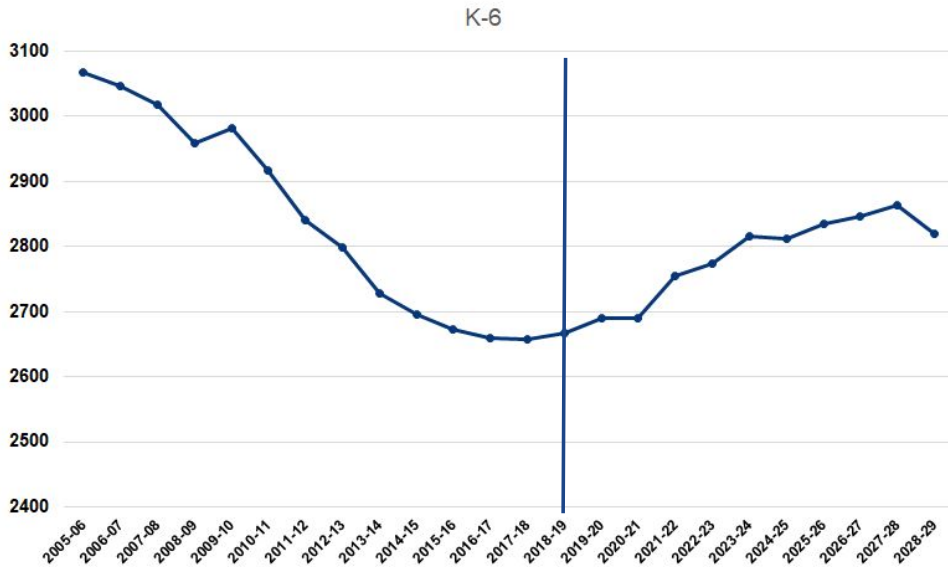
WELLNESS • EQUITY • ENGAGEMENT

K-12 Enrollment History and Projections

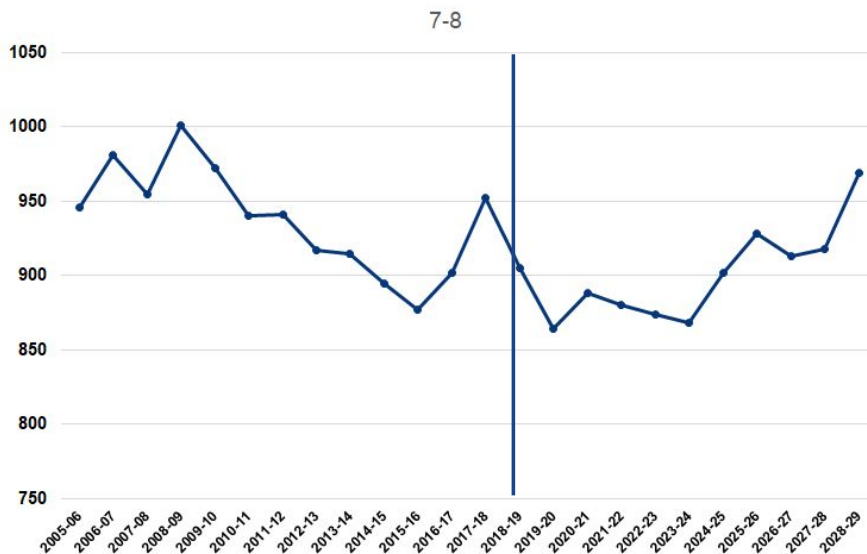


WELLNESS • EQUITY • ENGAGEMENT

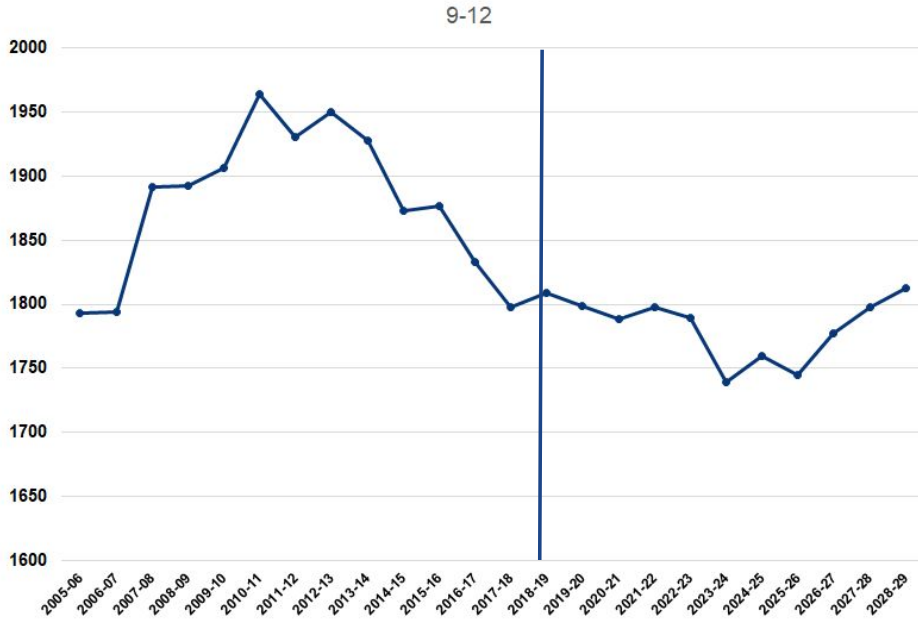
Elementary Enrollment History and Projections



Jr. High Enrollment History and Projections



High School Enrollment History and Projections



WELLNESS • EQUITY • ENGAGEMENT

Kindergarten Actual vs. Projections

	2014-15	2015-16	2016-17	2017-18	2018-19	2019-20
K Proj	317	312	286	298	314	346
K Actual	321	299	330	353	330	
Over Proj	+4	-13	+44	+55	+16	
Housing Sales Acton	310	400	514	486		
Housing Sales Boxborough	85	114	116	101		
Acton Births	179	179	165	162	139	172
Boxb Births		38	33	33	41	26

Kindergarten by Town

	Oct 1 Proj	Oct 1 Actual	Delta from Proj	% Delta from Projection
Acton FY19	239	266	+27	11.30%
Boxborough FY19	75	60	-15	-20%
Choice		4		
Totals FY19	314	330	23	7.3%
Acton FY20	299			
Boxborough FY20	43			
Total FY20	341			

Current Elementary Sections FY19

Classroom Section 2018-2019									
	Blanchard	Conant	Douglas	Gates	McT	Merriam	Total	Students	Ave Class Size
K	4	3	2	2	3	3	17	330	19.4
1	4	3	2	2	4	3	18	371	20.6
2	3	3	2	3	3	3	17	355	20.9
3	3	2	3	3	3	3	17	393	23.1
4	3	2	3	3	4	3	18	400	22.2
5	3	3	3	2	4	4	19	429	22.6
6	3	4	3	2	3	3	18	428	23.8
	23	20	18	17	24	22	124	2706	21.8

Elementary Sections Planned FY20

Classroom Section 2019-2020									
	Blanchard	Conant	Douglas	Gates	McT	Merriam	Total	Students	Ave Class Size
K	3	3	3	2	3	3	17	346	20.4
1	4	3	2	2	4	3	17	348	20.5
2	4	3	2	2	3	3	18	398	22.1
3	3	3	2	3	3	3	17	377	22.2
4	3	2	3	3	4	3	17	409	24.1
5	3	2	3	3	4	4	18	409	22.7
6	3	3	3	2	3	3	19	440	23.2
	23	19	18	17	24	22	123	2727	22.4
Reduce one 6th grade class at Conant as it graduates out									
Move Blanchard K to Douglas; Move Douglas 3rd grade to Blanchard 2nd grade									

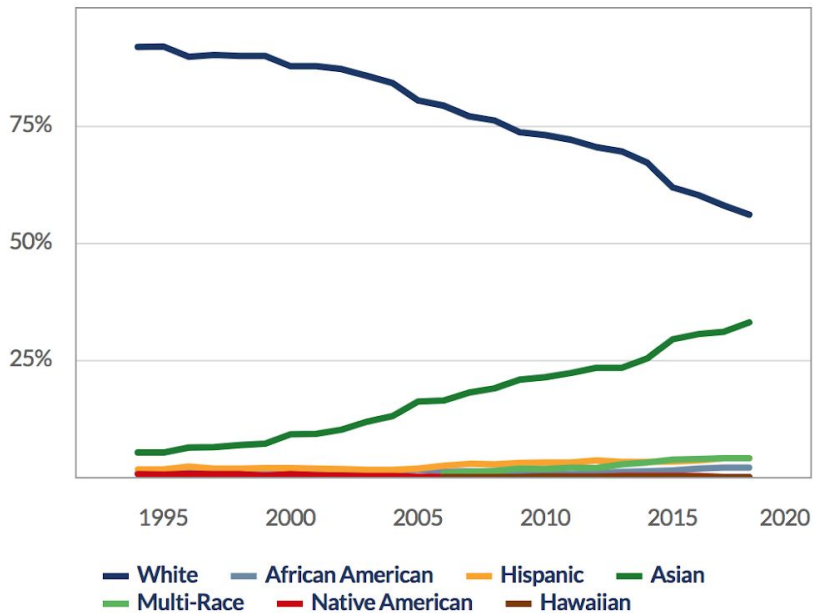
Elementary Section History

Classroom Sections			
	Acton	Boxborough	Total
FY '07	108	28	136
FY '08	108	27	135
FY '09	108	26	134
FY '10	108	25	133
FY '11	108	24	132
FY '12	107	23	130
FY '13	106	22	128
FY '14	105	22	127
FY '15	103	20	123
FY '16	103	18	121
FY '17	102	19	121
FY '18	101	21	122
FY '19	101	23	124
FY '20	100	23	123

Student Demographics

WELLNESS • EQUITY • ENGAGEMENT

Student Racial Diversity Over Time



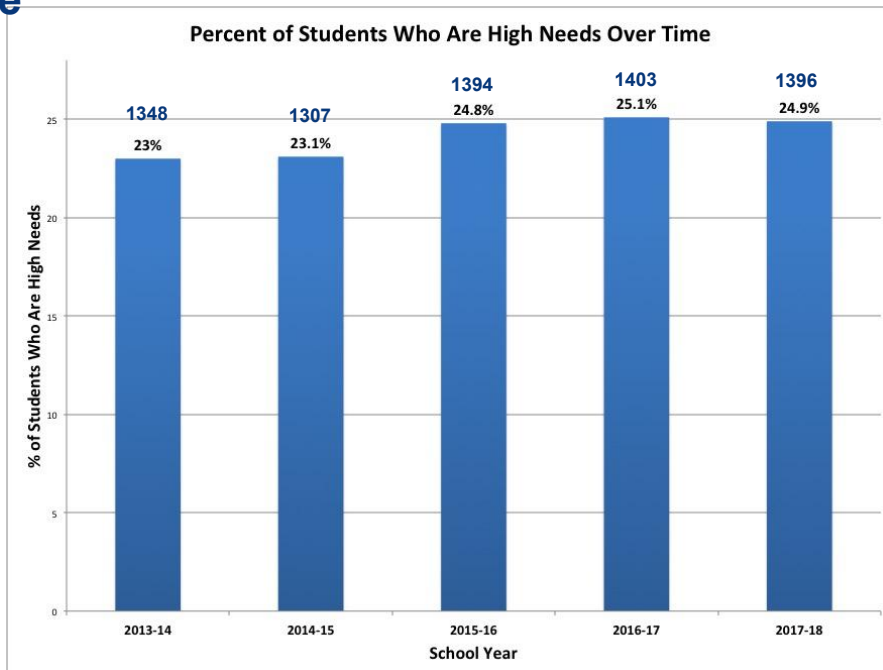
Enrollment as of October 1 for each school year listed
Graph downloaded from www.cleargov.com

Students Considered “High Needs”

Students fall into DESE’s “high needs” category if they are designated as one *or more* of the following:

- Economically Disadvantaged (ED)
- English Learner (EL)
- Former English Learner (FEL)
- Student with an IEP (SWD/IEP)

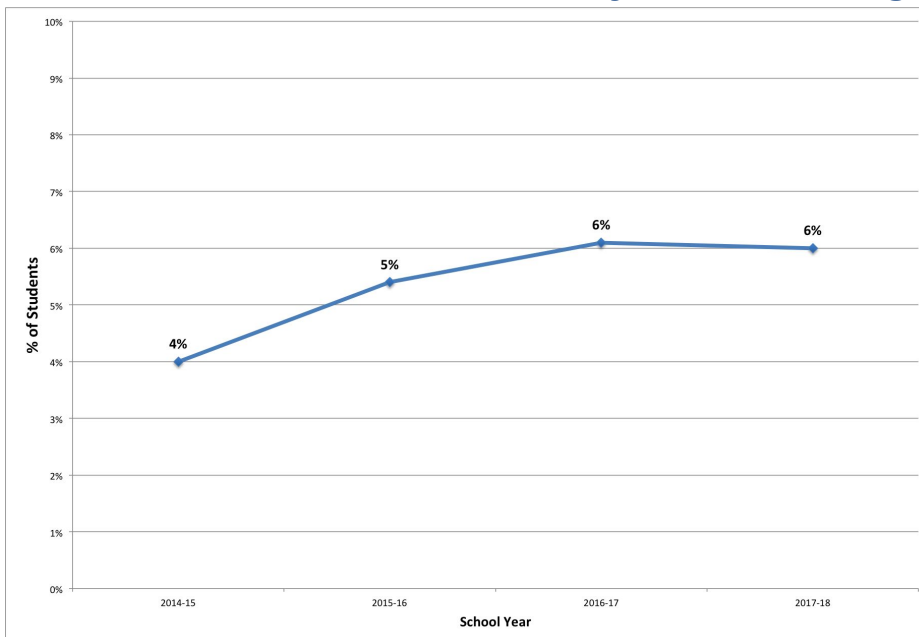
Students who are High Needs: Trends Over Time



Students who are Economically Disadvantaged and Receiving Free/Reduced Lunch

WELLNESS • EQUITY • ENGAGEMENT

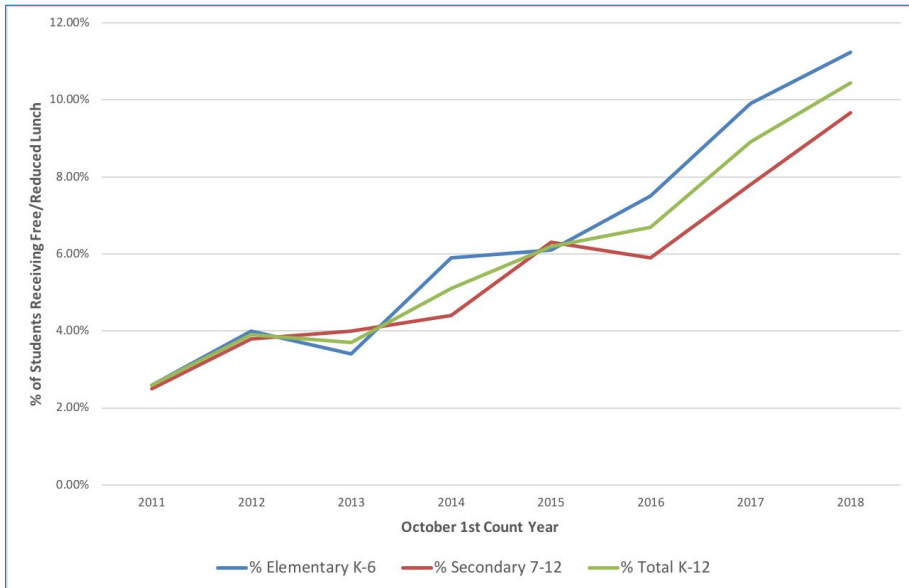
Students who are Economically Disadvantaged



Source: DESE Selected Populations Reports

WELLNESS • EQUITY • ENGAGEMENT

Students Receiving Free/Reduced Lunch (October 1 Count)



148% increase over the past 8 years

WELLNESS • EQUITY • ENGAGEMENT

Students Who Are English Learners

WELLNESS • EQUITY • ENGAGEMENT

Students who are English Learners (ELs) Enrollment

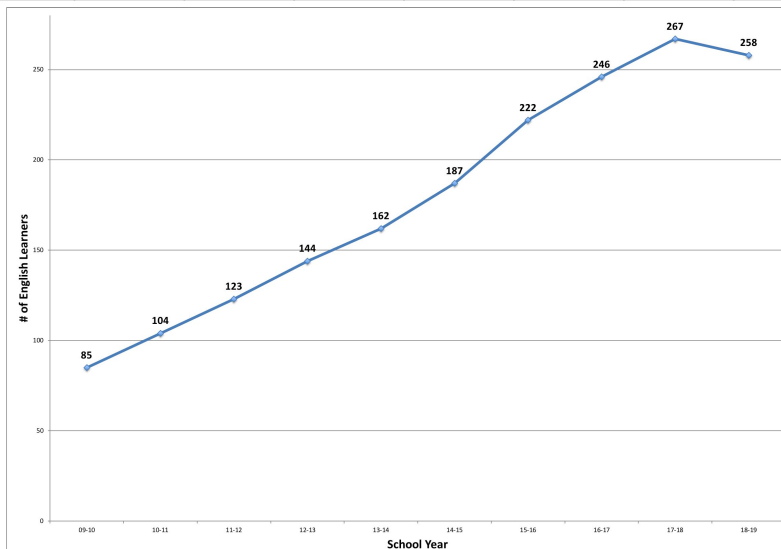
School/ELE Teacher FTE	Total # Enrolled	# of ELs	% of School Enrollment
<i>CHECP* (0)</i>	105	13	12.4%
<i>Blanchard (0.8)</i>	464	29	6.3%
<i>Conant (2.0)</i>	449	42	9.4%
<i>Douglas (1.0)</i>	405	17	4.2%
<i>Gates (2.0)</i>	376	52	13.8%
<i>McCarthy-Towne (1.0)</i>	520	35	6.7%
<i>Merriam (1.0)</i>	492	27	5.5%
<i>RJGJHS (1.0)</i>	923	22	2.4%
<i>ABRHS (1.0)</i>	1837	21	1.1%
TOTAL:	5571	258	4.6%

Enrollment as of January 20, 2019

WELLNESS • EQUITY • ENGAGEMENT

Students Who are English Learners (October 1 Count)

09-10	10-11	11-12	12-13	13-14	14-15	15-16	16-17	17-18	18-19
85	104	123	144	162	187	222	246	267	258*



204%
increase
over the past
decade

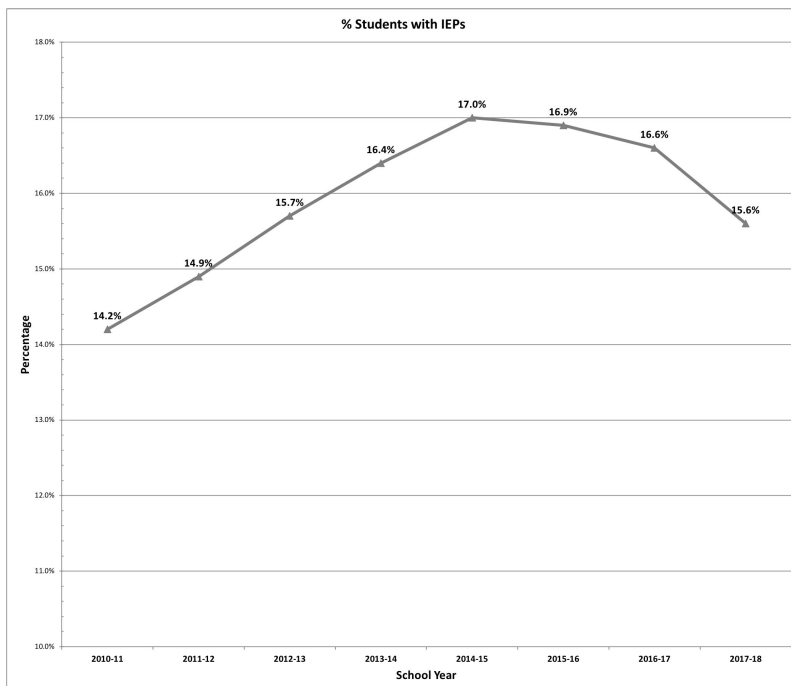
*Based on enrollment 1/20/19

WELLNESS • EQUITY • ENGAGEMENT

Students with Individualized Education Programs and 504 Plans

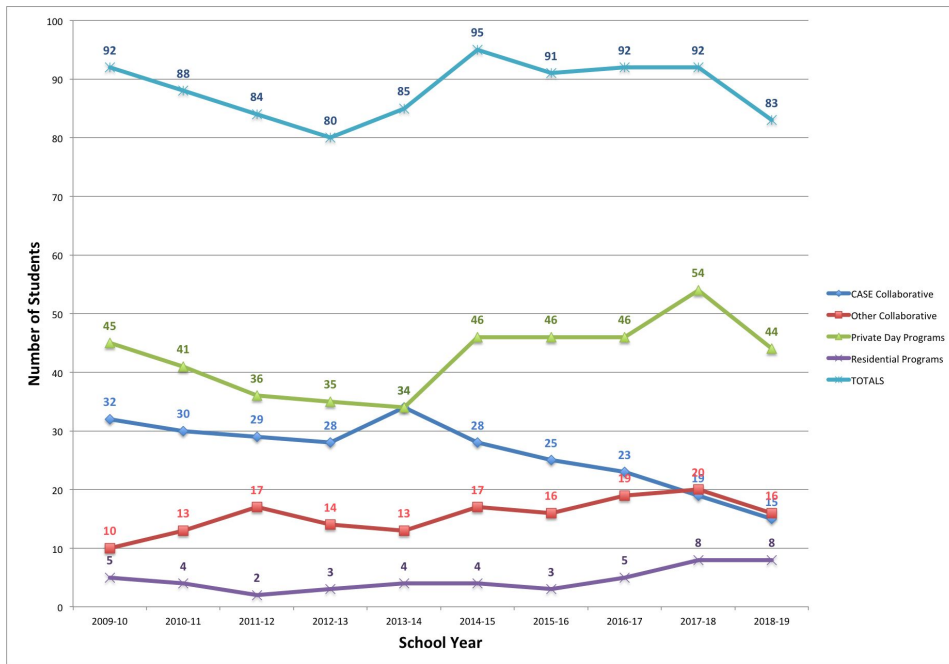
WELLNESS • EQUITY • ENGAGEMENT

Number of Students with IEPs *(October 1 Count)*



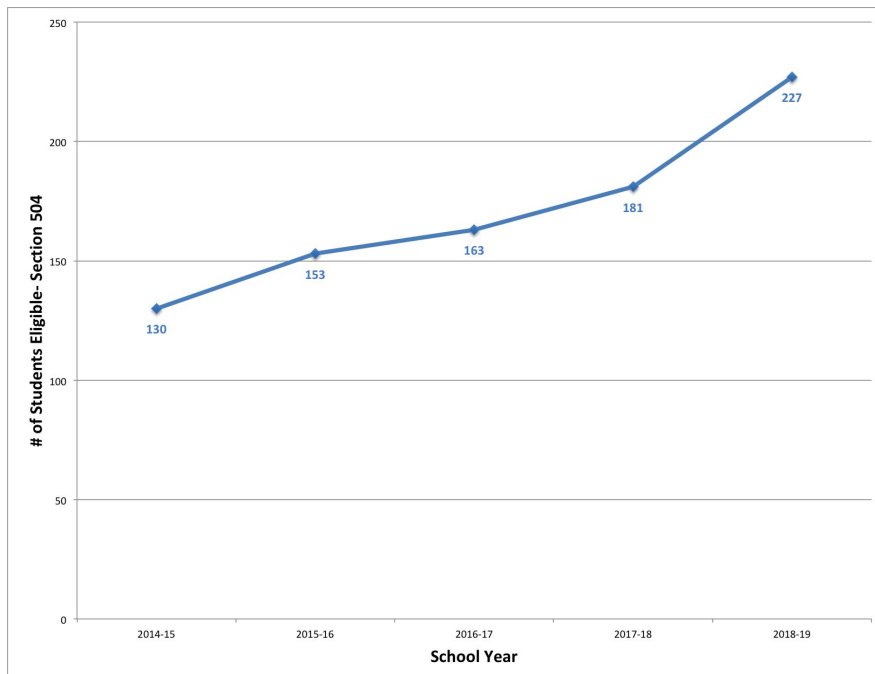
WELLNESS • EQUITY • ENGAGEMENT

Out-of-District Enrollment: 2009-19 *(October 1 Count)*



WELLNESS • EQUITY • ENGAGEMENT

Students with 504 Plans *(October 1 Count)*



WELLNESS • EQUITY • ENGAGEMENT

The Students We Serve Questions????

Break: Resume at 10:40
